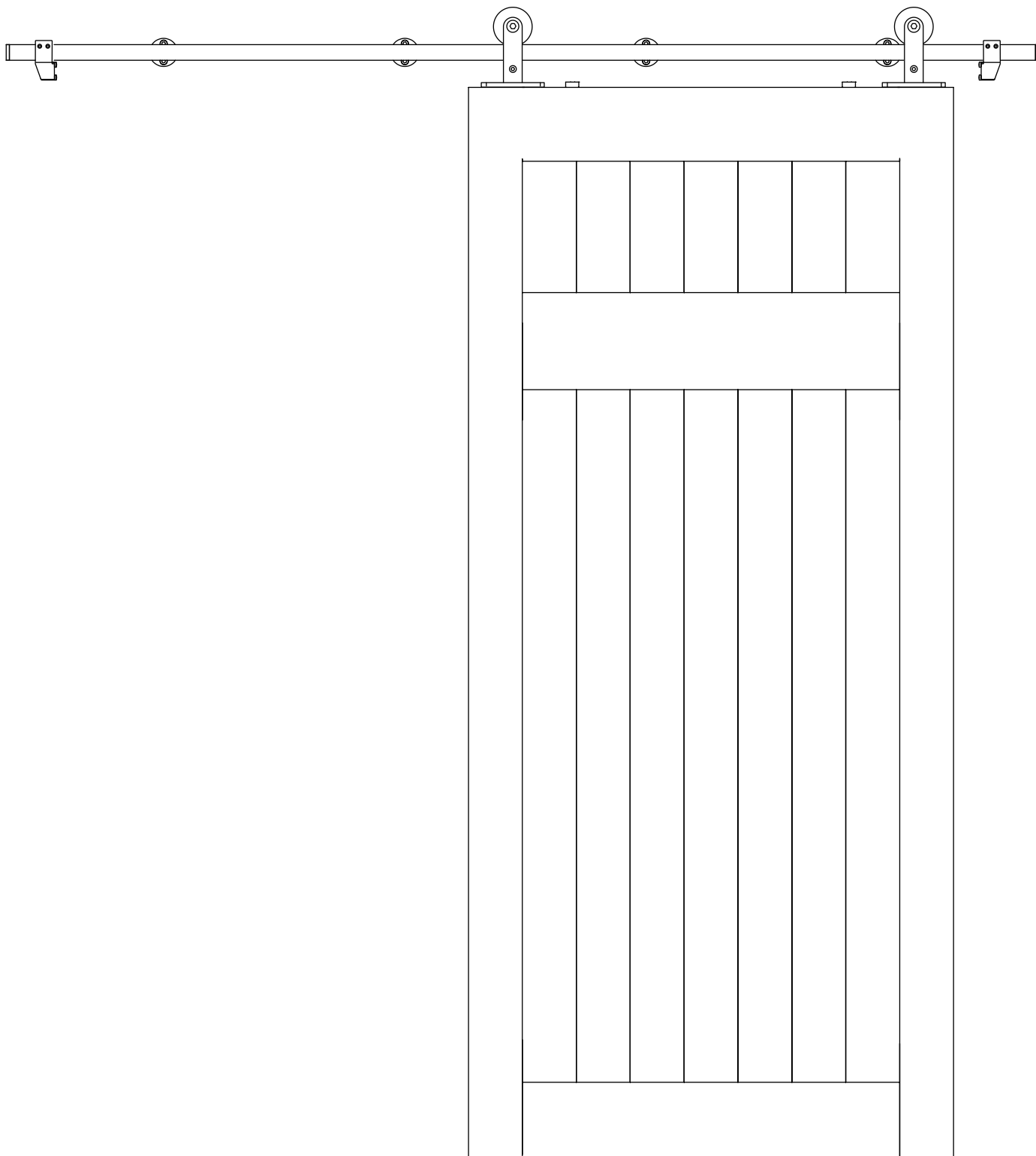




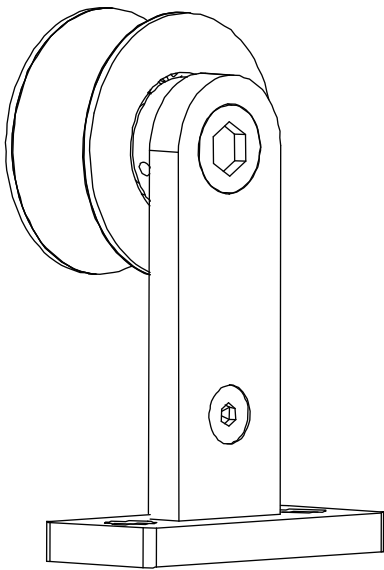
Top Mount Stainless Barn Door Hardware Installation Instructions

Note: If you encounter any problems with the package and/or the following installation, please email us at info@doubledw.com and include your order id.

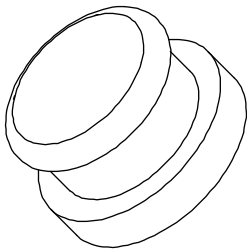


TRACK ACCESSORIES

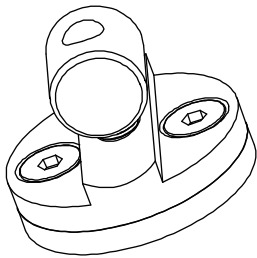
Steel Hanger



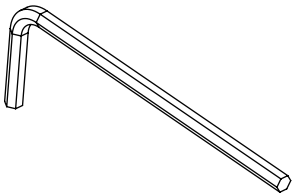
Tube Plug



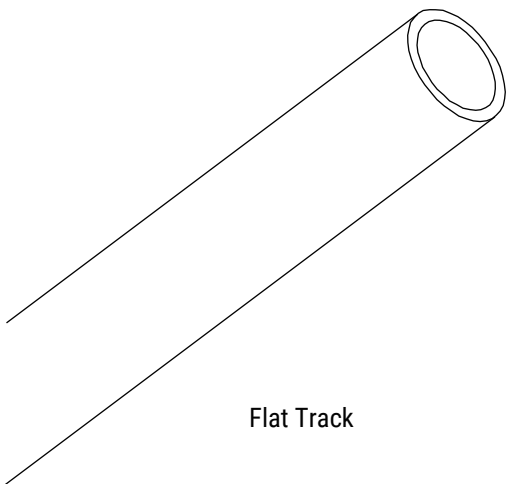
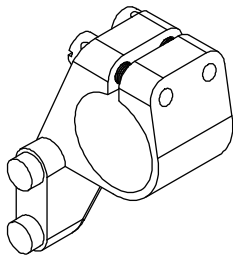
Spacer



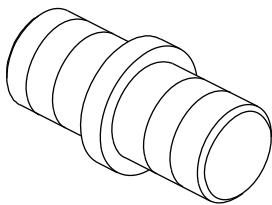
Hex Wrench



Door Stopper



Flat Track

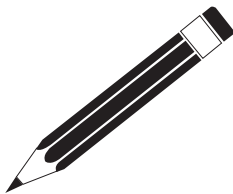


Junction Plate

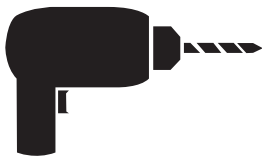
INSTALLATION TOOLS



Ruler



Pencil



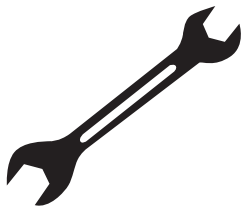
Drill



Level



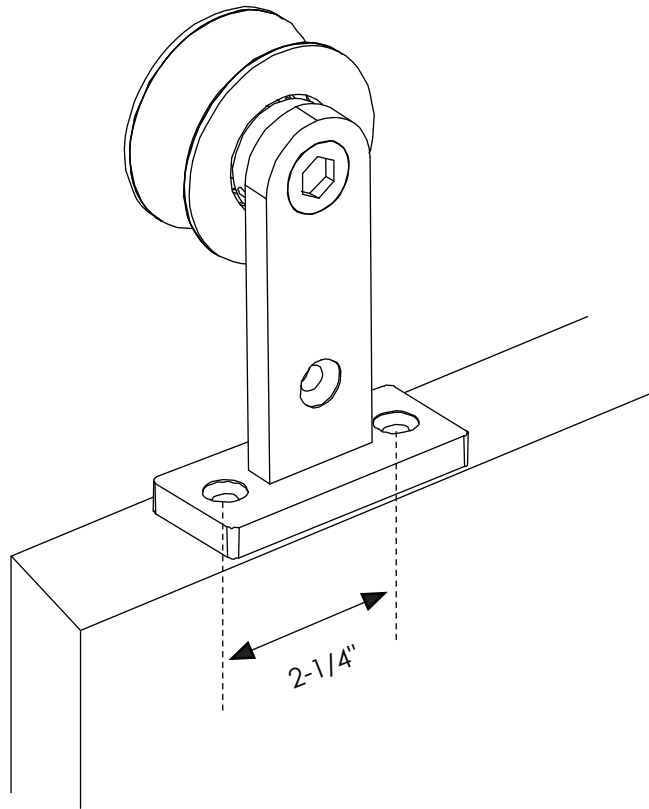
Ratchet



Wrench

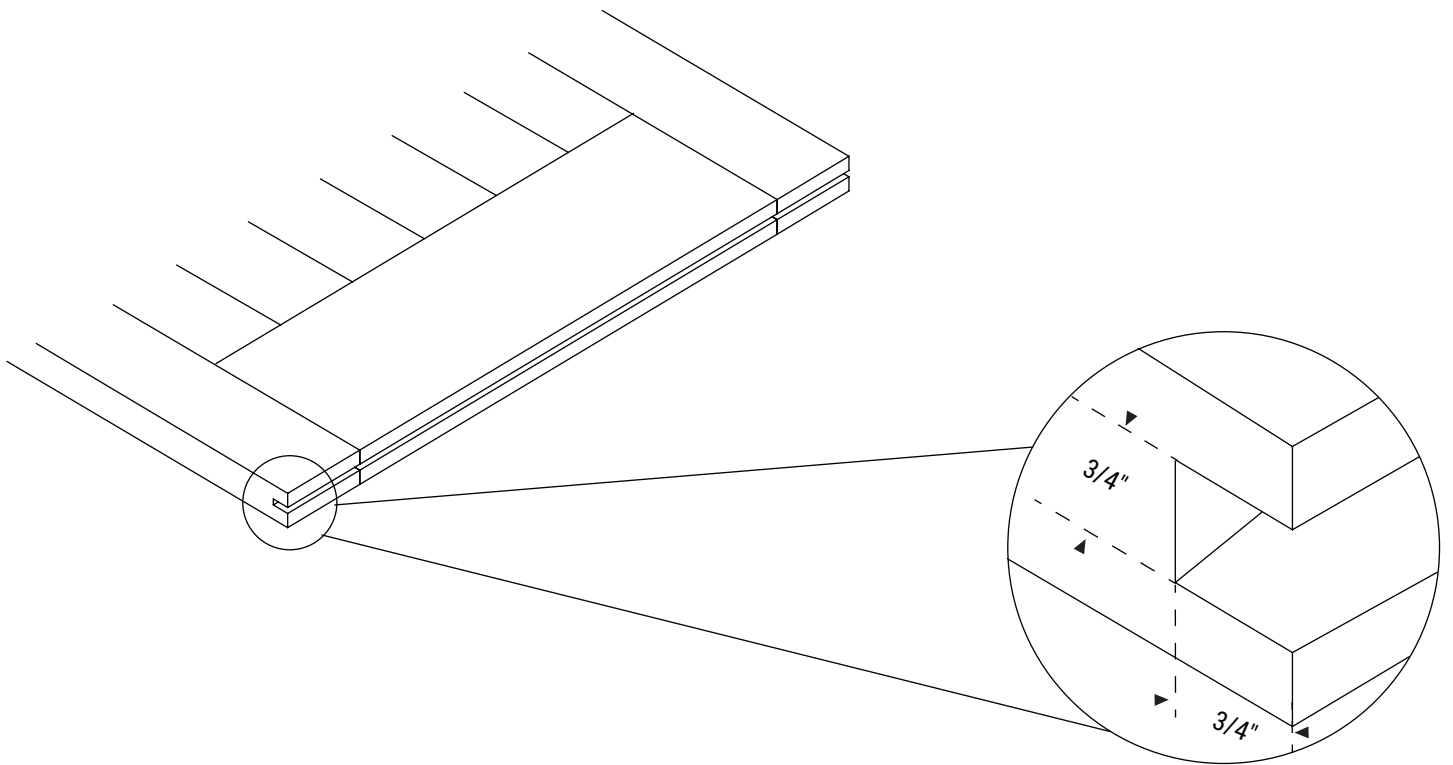
Step 1: Hardware Installation

- Attach Hangers as shown below.



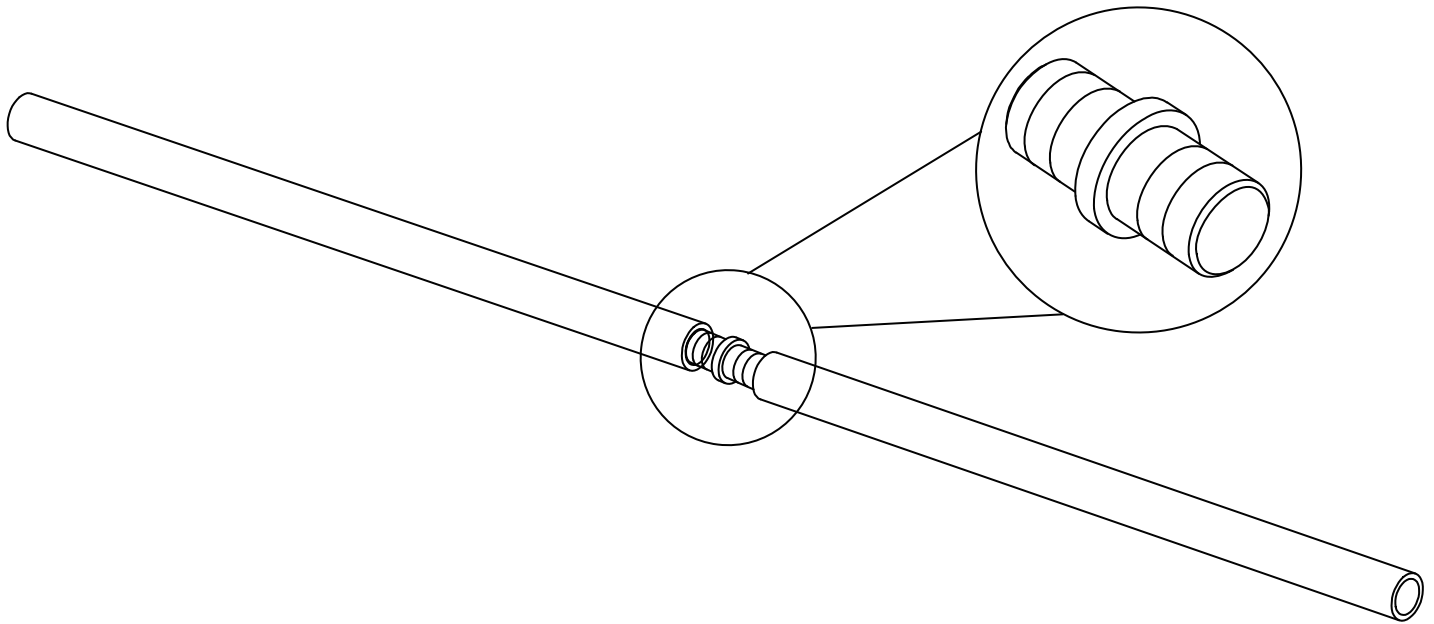
Step 2: Optional - Cut Floor Guide Slot in Bottom of the Door

- Cut a $\frac{3}{4}$ " wide, $\frac{3}{4}$ " deep slot at the bottom of the door.
Recommended: Cut the slot with a router and slot cutter bit.



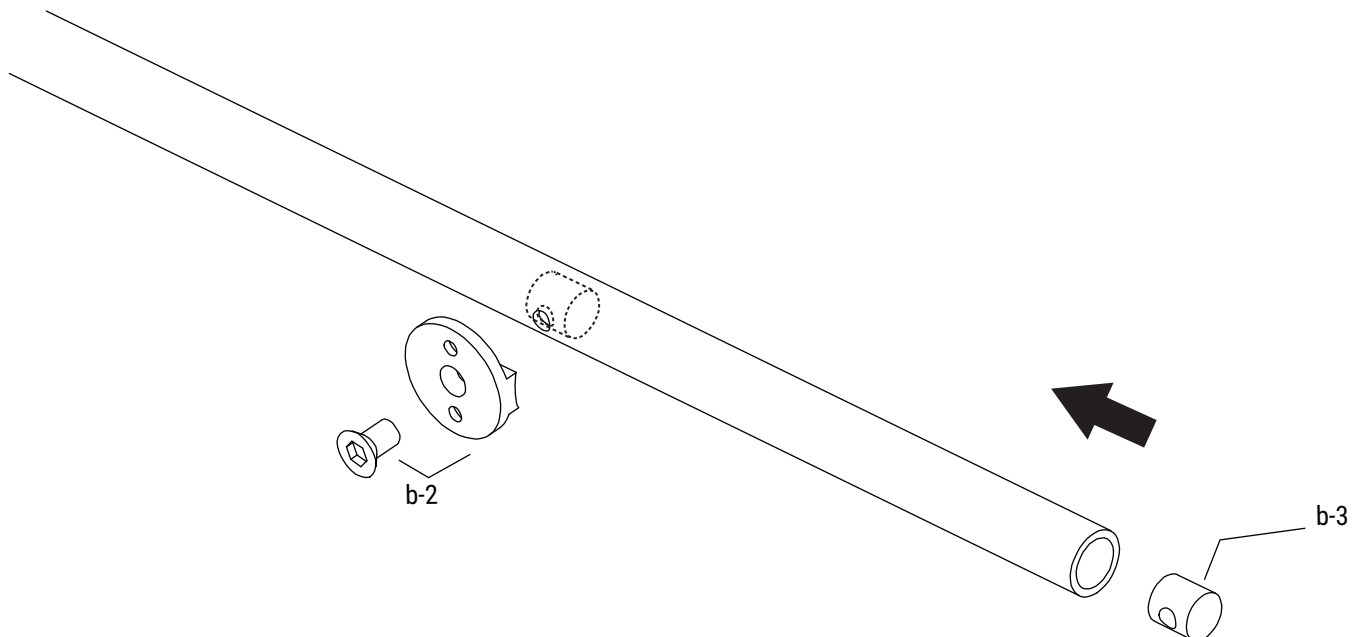
Step 3: Connect Tracks and Install Door Stoppers

- Connect your tracks with junction plates if needed



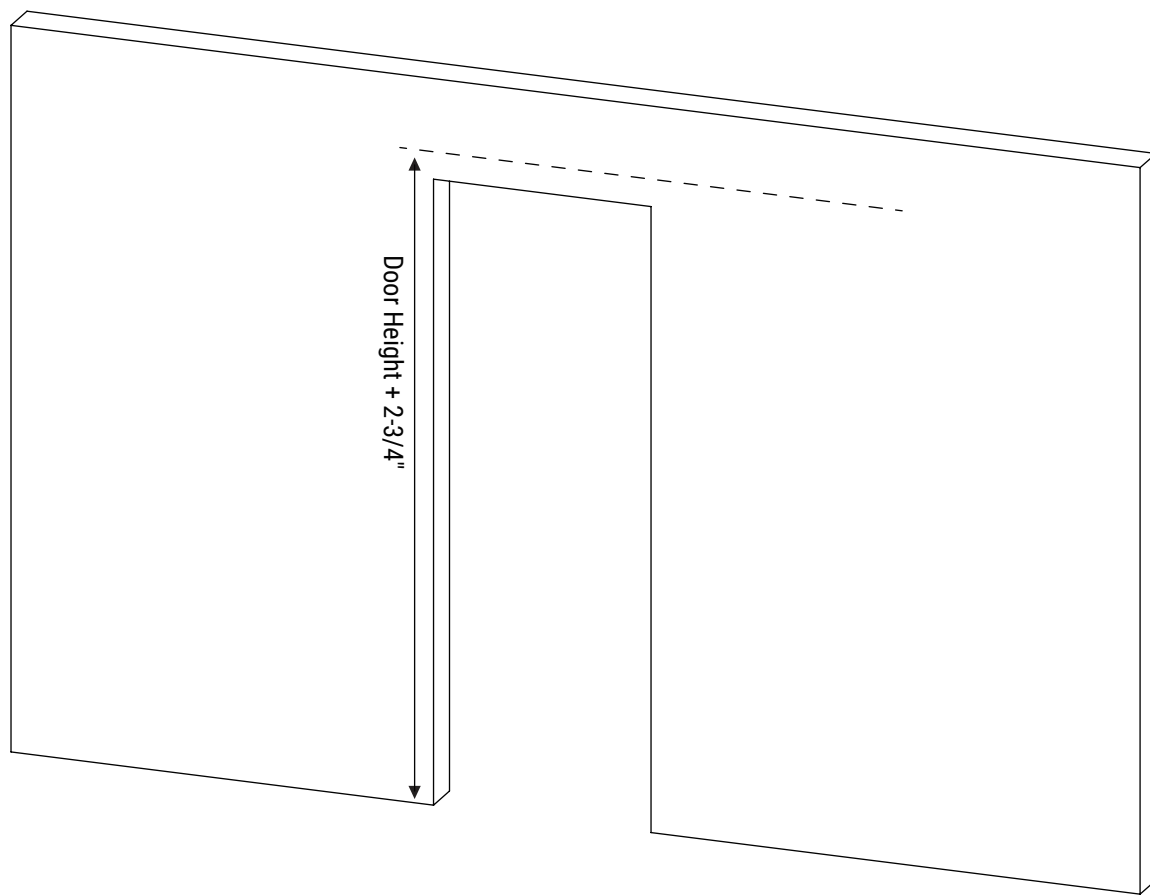
Step 4: Install Spacers

- Putting the b-3 into the rail and make the hole direction of b-3, rail and b-2 is consistent. Installing in order from inside to outside to prevent missing the hole.



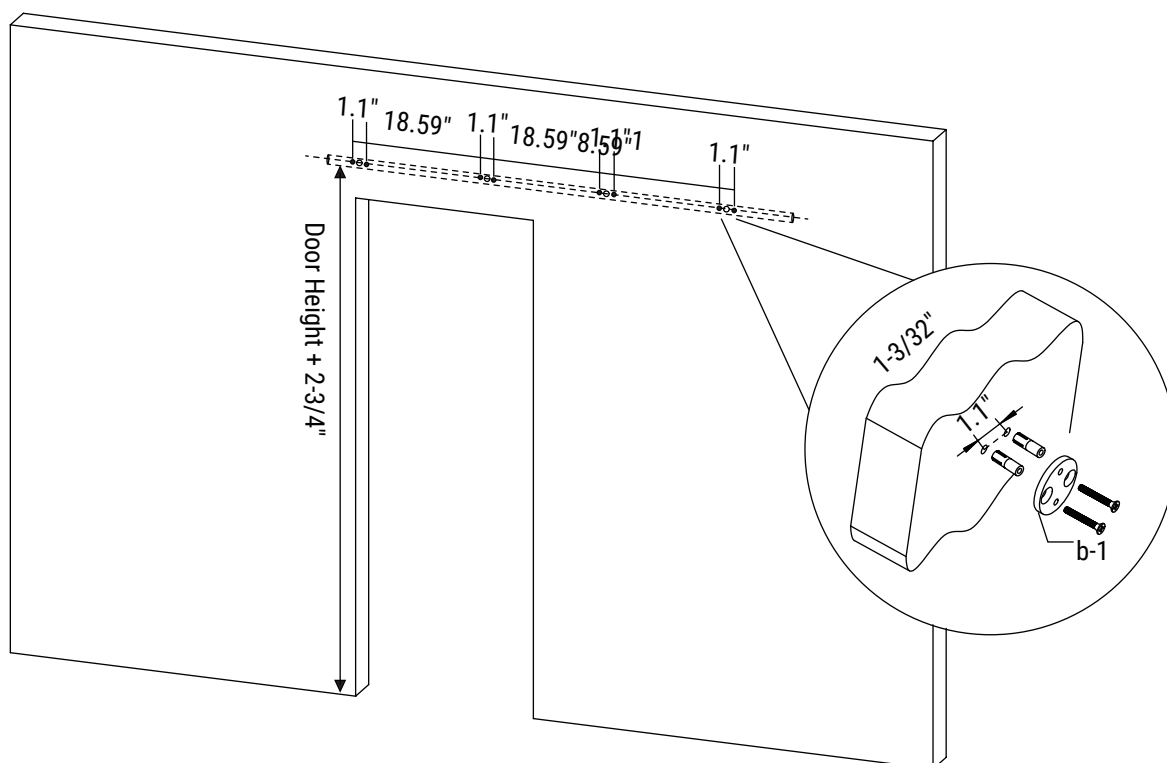
Step 5: Draw Line for the Track

- Using a level, draw a line to install the Track, at the door height + 2-3/4" above the floor.



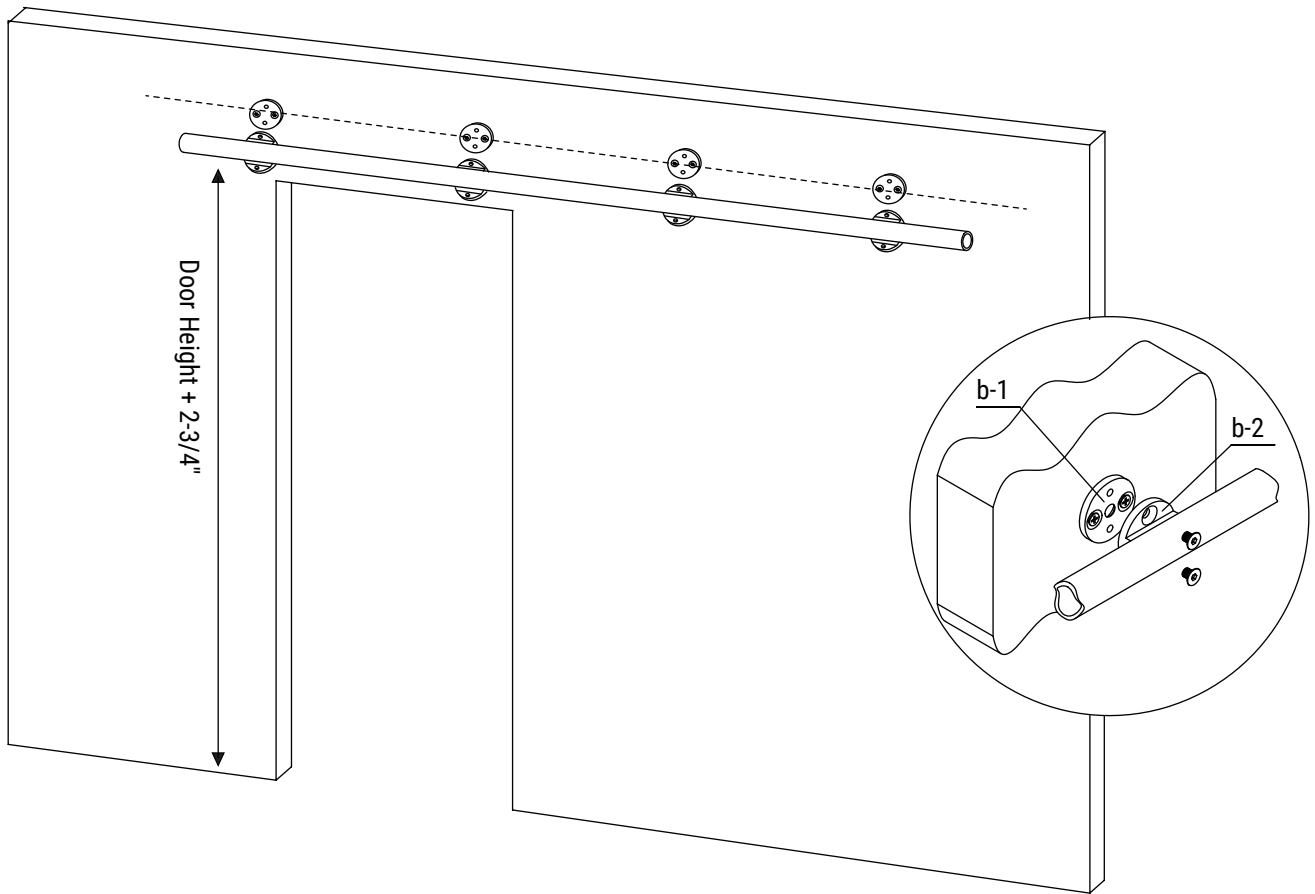
Step 6: Mark and Drill Track Holes

- Line up a Track on the line and mark the location of the holes
- Punch all the marked positions into the wall with impact drill, put the expansion pipes into the holes created, then punch the pipe pins into the wall until the expansion pipes expand at their ends, screw b - 1 into the expansion pipe.



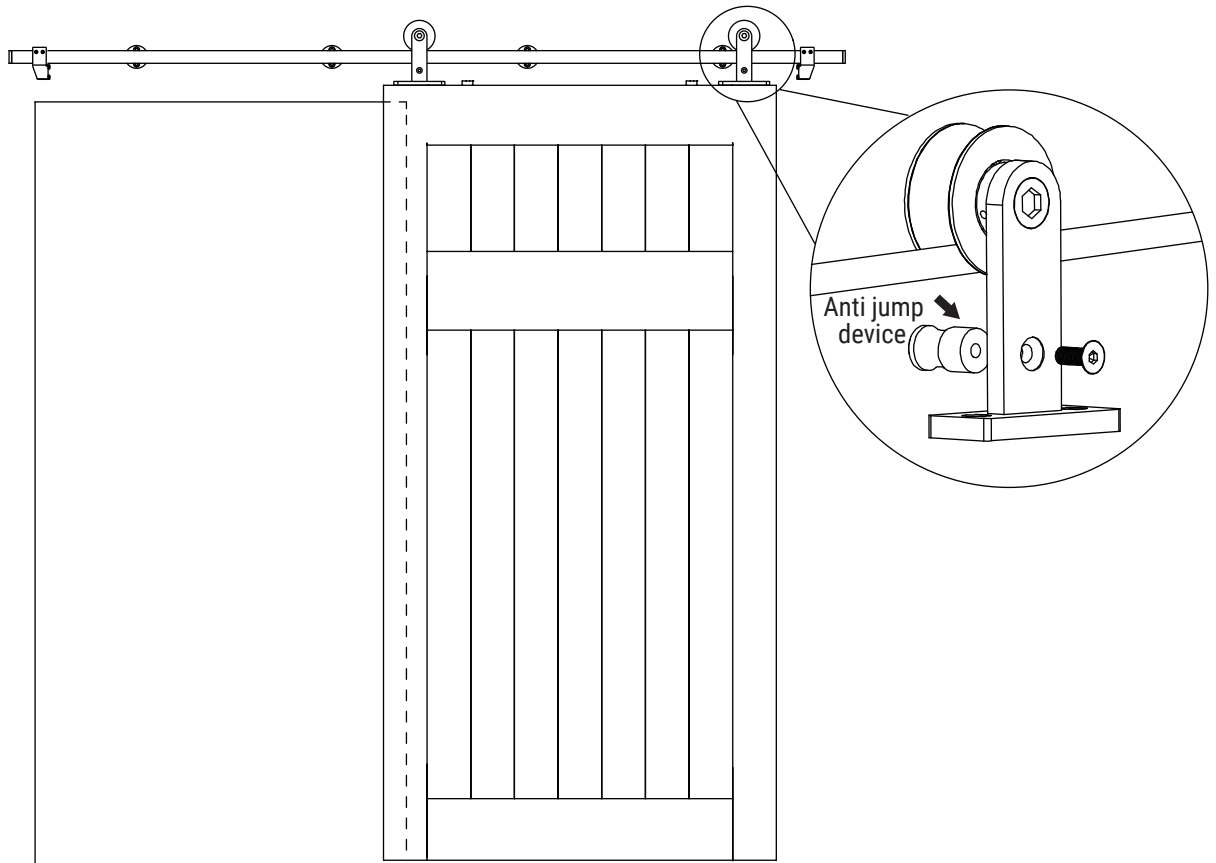
Step 7: Install the Track

- Overlapping b - 1 and b - 2 and tighten to fix the rails to the wall. Now you have installed the track on the wall successfully.



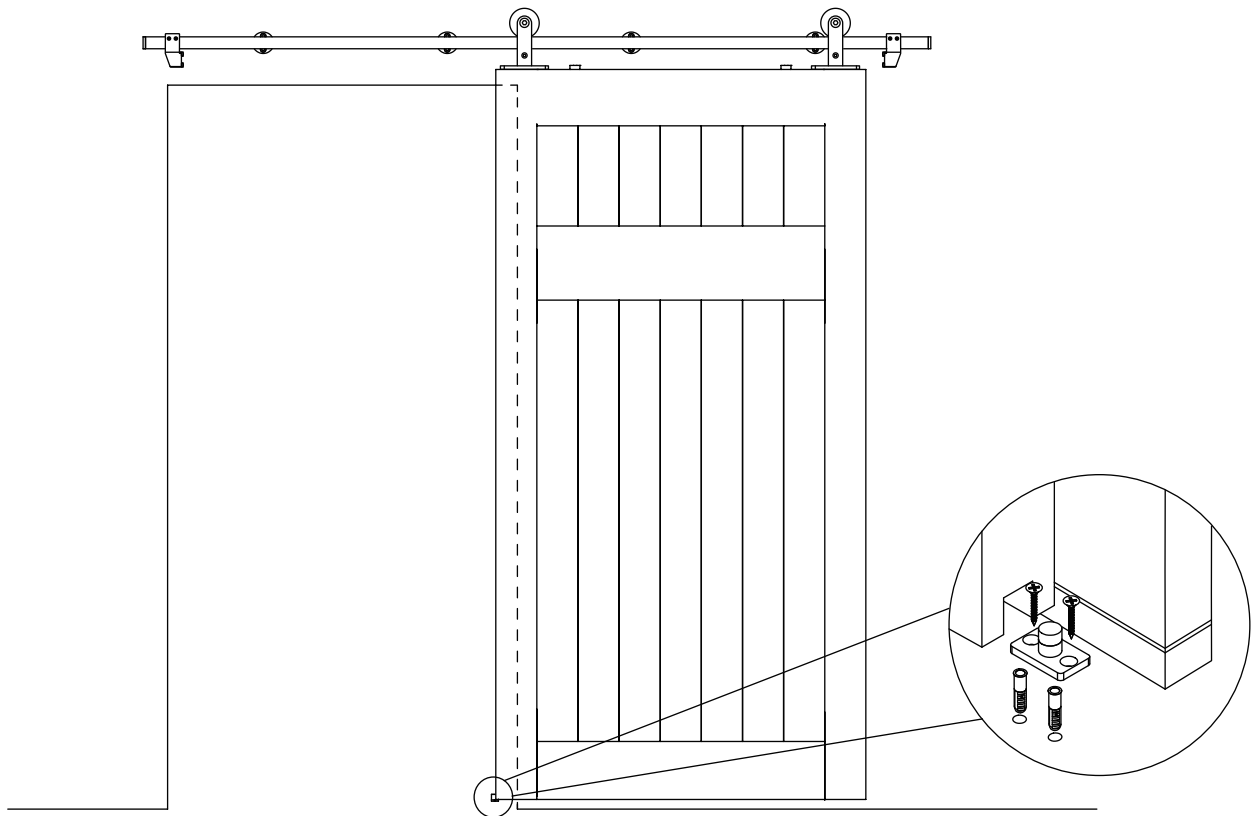
Step 8: Install Doors

- Hang your Steel Hangers on the Track, and then adjust the anti-jump bar up or down so that it could make the roller clamp the track.



Step 9 Install Floor Guide

- Position the door at your desired open position, put half of the floor guide under the door, mark the location, and then fix guide to the floor.



WARNING

- Failure to wear proper safety gear (i.e., eye protection) may result in serious injury or death. Always wear proper safety gear before using power tools.
- Improper operation of power tools may result in loss of control, serious injury or death. Always ensure you have complete control of the power tool and the work area is free of hazards before operating a power tool.
- Lack of secure clamping of the door may result in unexpected movement of the door, loss of power tool control and serious injury or death. Always securely clamp the door in place before cutting, or drilling, the door.
- Lack of, or improperly installed tracks, wheeled hanger/roller assemblies or floor guides may result in the door coming out of the track and cause serious injury or death.



CAUTION

- Mishandling of heavy objects (i.e., doors) may cause a loss of balance and serious injury. Always be sure you have a secure hold on the object and are balanced before moving the object. Always wear safety shoes when lifting heavy objects.
- Getting body parts (i.e., hair, fingers) caught in moving parts may cause pinching and serious injury. Do not put fingers in parts that may move and always remove or contain anything on your body that may become entangled with a moving part.
- Closing bypass/sliding doors with your hand on the end of the door may result in your hand, or fingers, getting caught between the door and other solid objects (i.e., another door, molding) causing serious injury. Always use a door handle to close doors.

Usage Statement:

Use of excessive force when opening, and closing, the door(s) may result in damage to the hardware.



* For more information visit the DDW website at: www.doubledw.com or call 716.202.8560
Specifications are subject to change. Confirm with Dalmatian Doors and Woodworking before ordering.