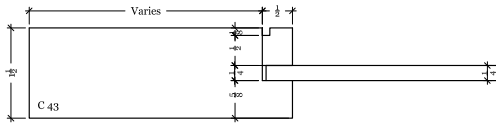


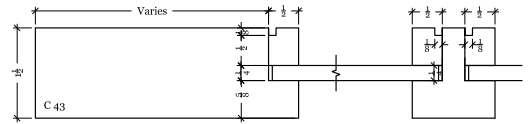
Non-Rated Interior Solid Wood Doors with Glass Panels

**Door Construction:**

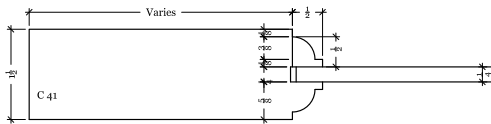
Quirk Shaker Profile Detail at Glass



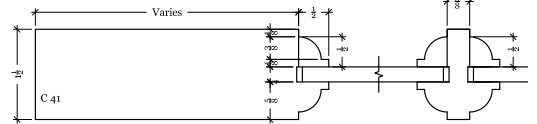
Quirk Shaker TDL\* Profile Detail at Glass



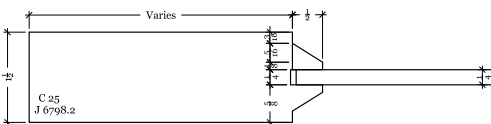
Bead Profile Detail at Glass



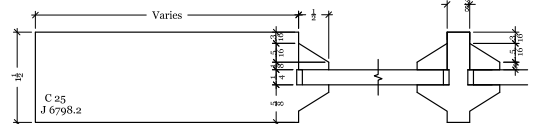
Bead TDL\* Profile Detail at Glass



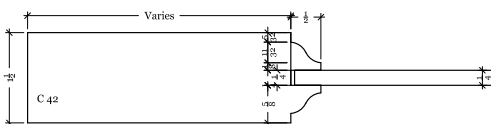
Bevel Profile Detail at Glass



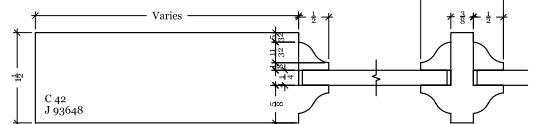
Bevel TDL\* Profile Detail at Glass



Ogee Profile Detail at Glass



Ogee TDL\* Profile Detail at Glass



\* TDL = True Divided Lite

**Product Features & Specifications:**

<b>Thickness</b>	1-1/2" <i>Additional thicknesses available upon request</i>
<b>Maximum Size</b>	<i>Varies based on type and style Width &amp; height restrictions may apply based on door type</i>
<b>Door Material Construction</b>	Solid Wood
<b>Method Finish</b>	Stile and Rail
<b>Available Grades/Wood Species</b>	Paint Grade (Primed White) <i>Poplar</i> Stain Grade (Raw Wood) <i>Poplar, Clear Pine, Alder, Cherry, Red Oak, White Oak, Mahogany, Black Walnut</i>
<b>Available Styles</b>	Any standard or custom design that meets the specifications in this document <i>See DDW online catalog for more details</i>
<b>Available Glass Types</b>	Clear Tempered, Clear Safety, Satin Acid Etched Tempered, White Laminated Privacy, Rain

**Panel Construction**

*doors with combined panel & glass*

Glass Panel Thickness	1/4"
Raised Panel Thickness	1"
Flat Panel Thickness	1/2"

**Panel Size**

*doors with combined panel & glass*

Minimum Panel Size	No minimum
Maximum Panel Size	No minimum

**Stock Dimensions**

Left & Right Stile Flat	4-3/8" <i>Varies based on size and style</i>
Top Rail Flat	4-3/4"
Bottom Rail Flat	7"
Mid Rail Flat	2-3/4" <i>Varies based on style</i> <i>Can be built larger to meet ADA requirements</i>

**Warranty**

*See warranty sheet*

\* For more information visit the DDW website at: [www.doubledw.com](http://www.doubledw.com) or call 716.202.8560  
 Specifications are subject to change. Confirm with Designer Doors and Woodworking before ordering.